

SUBJECT: COMPUTER STUDIES CLASS: SS 2

OBJECTIVES TEST

Answer all the questions

Each question is followed by four options lettered A to D. Find the correct option for each question and shade in pencil on your answer sheet the answer space which bears the same letter as the option you have chosen .

Send your answer to this email. [samtaye82@gmail. Com](mailto:samtaye82@gmail.com)

Enter your name at the top of your answer

1. The personnel who deals with the computer and its management is called
 - a. Software (b) liveware (c) hardware (d) firmware
2. The map of Nigeria is an example of
 - a. Alphabetic data (b) audio data (c) biometric data n (d) graphic data
3. The hexadecimal number 13 expressed as a binary number is
 - a. 00010011 (b) 00101100 (c) 00010110 (d) 00100100
4. Which of the following statements are true about computer?
 - I It is constructed from electronic components
 - II It has self-regeneration capability
 - III It has facility for storage of data and programs
 - IV It has provision for input and output of data
 - a. I, II and III only (b) I, II and IV only (c) I, III and IV only (d) II, III and IV only
5. Modern computers compared to earlier computers are
 - a. Faster and larger (b) faster and smaller (c) larger and stronger (d) less reliable
6. An input device that converts an image into text is known as
 - a. Optical Character Reader (b) Optical Code Reader (c) Optical Display Reader (d) Optical Mark Reader
7. The type of printer which works on the same principle as a photocopier is
 - a. Dot Matrix Printer (b) Ink Jet Printer (c) Laser Jet Printer (d) Thermal Printer
8. The output of NAND gate is 1 when
 - a. All inputs are 0 (b) all inputs are 1 (c) any of the input is 0 (d) any of the input is 1

Use the MS Excel table below to answer questions 11 and 12

S/N	A	B	C	D
1	Stock List of Tayo Okeke as at May 2014			
2	Quoted Stock	Share Unit	Current Unit Price (N)	Value
3	Tanzel Plc	44,000	50	2,200,000
4	Kaptol	125,000	80	####
5	Bank KLM	75,000	140	####
6	Anix Oil	10,000	250	2,500,000
7	TOTAL VALUE			

9. The formula used to compute the TOTAL VALUE in cell D7 is
 - a. =sum(D2:D7) (b) =sum(D3:D7) (c) =sum(D2:D6) (d) = sum(D3:D6)
10. Which of the following columns needs to be adjusted to accommodate the cells contents?
11. Converting 4B7_{hexadecimal} to binary is
 - a. 010010100111_{two} (b) 010010110111_{two} (c) 010010000111_{two} (d) 010011000111_{two}
12. The modifier keys on the computer keyboard comprises of
 - a. DEL, ESC and ALT keys (b) CTRL, CAPS LOCK and DEL keys (c) SHIFT, CTRL and ALT keys (d) CTRL, ALT and DEL keys
13. Arrange in hexadecimal order by date the following inventions
 - I. Census machine
 - II. Abacus
 - III. Slide Rule
 - IV. Difference engine
 - a. I, II, III and IV (b) I, III, II and IV (c) I, II, IV and III (d) I, IV, III and II
14. The _____ is found in the CPU of a computer
 - a. Main memory (b) modem (c) mother board (d) register
15. In order to find and load a file that has been saved, you need to select the _____ command
 - a. Close (b) new (c) open (d) recycle
16. The central processing unit is connected to the
 - a. Expansion boards (b) expansion slots (c) memory chip (d) motherboard
17. Which of these packages is appropriate for preparing payroll of workers?
 - a. CorelDraw (b) Microsoft Access (c) Microsoft Excel (d) Microsoft word
18. In a worksheet, a set of data is called
 - a. Column range (b) data base (c) data file (d) data range
19. 1 megabyte is equivalent to _____ kilobytes
 - a. 1000 (b) 1024 (c) 1204 (d) 1034
20. Program files contain _____ for the computer's microprocessor
 - a. Data (b) Document (c) Images (d) Instructions

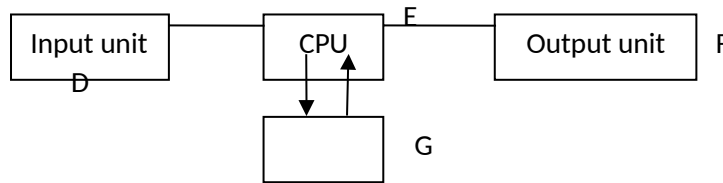
21. Convert 109_{10} to octal

- a. 55_8 (b) 105_8 (c) 115_8 (d) 155_8

22. Which of the following is not a benefit of internet?

- a. E-commerce (b) E-learning (c) Information (d) User name

23. In the diagram below, the area labelled G represents _____ unit



- a. Data (b) Extended (c) Information (d) Memory

24. The processed data produces _____ an output

- a. Data (b) Information (c) Instruction (d) Observation (e) Outcome

25. The X  gate

- a. AND (b) NAND (c) NOR (d) NOT (e) XOR

26. Which of the following is not a logic function?

- a. ADD (b) AND (c) NAND (d) NOT

27. A group of attributes or fields in a database is known as a

- a. Data (b) File (c) Query (d) Record

28. A program that converts statements written in one language to another is called

- a. Assembler (b) Compiler (c) Interpreter (d) Translator

29. A/An _____ language is an artificial language that can be used to control the behaviour of machine

- a. Database management system (b) Natural (c) Programming (d) Software

30. READ statement performs the same action as

- a. DATA (b) END (c) INPUT (d) OUT

31. The medium through which information is transferred or moved from one network device to another is called a/an

- a. Adapter (b) Cable (c) Printer (d) Registered jack (RJ)

32. Which of these device allows computer component to communicate with each other?

- a. Keyboard (b) Light pen (c) Memory (d) System bus

33. A table of values arranged in rows and columns, in application package is known as

- a. Arrays (b) Database (c) Graphics (d) Spreadsheet

34. Which of the following is an example of a BASIC language keyword

- a. COPY (b) CUT (c) INPUT (d) MOVE

35. The type of integrated circuit which consist of arithmetic unit and control unit is called a

- a. Mega computer (b) mega processor (c) micro computer (d) micro processor

36. Which of the following work as both Input-Output devices?

- a. Joysticks (b) Keyboard (c) Modem (d) Mouse
- 37. In a database, a primary key is a field which contains
 - a. Text only (b) unique entries (c) duplicate values (d) numeric value only
- 38. Which of the following is not a method of accessing file?
 - a. Circular (b) Random (c) Serial (d) Sequential
- 39. Which of the following statements is not true about secondary storage media? They
 - a. Are volatile (b) are non-volatile (c) are relatively cheap (d) have storage capacity
- 40. The application software which allows information available on the internet to be obtained is called (a) browser (b) world wide web (c) spreadsheet (d) internet protocol
- 41. A digital file is a collection of data that cannot be stored in a
 - a. cabinet drawer (b) flash drive (c) floppy disc (d) hard disk (e) zip folder
- 42. Which of the following cannot be used as a primary key?
 - a. Date of birth (b) Department number (c) Receipt number (d) Registration number (e) Subject code
- 43. What does “SMS” stands for?
 - a. Short Machine Service (b) Short Machine System (c) Short Memory Service (d) Short Message Service (e) Short Message System
- 44. The term e-commerce is described as _____ through the internet
 - a. Buying and selling of goods and services (b) production of commerce text books (c) sending and receiving of messages (d) sending and receiving of goods and services (e) studying of commerce as a subject
- 45. Information stored in RAM is _____
 - a. Invisible (b) non volatile (c) secured (d) virus infected (e) volatile
- 46. 20 nibbles is equivalent to _____ bits
 - a. 51 (b) 62 (c) 70 (d) 80 (e) 100
- 47. The letter “S” in the acronym BASIC represents _____
 - a. Sage (b) semantic (c) software (d) symbolic (e) systematic
- 48. Which of the following storage media is the fastest in speed?
 - a. Floppy disk (b) hard disk (c) RAM (d) register (e) ROM
- 49. Which of these is a primary storage device?
 - a. Compact disk (b) Flash drive (c) Floppy disk (d) Hard disk (E) RAM